



**Holly Crump, Director**

Email: [coppercutup@msn.com](mailto:coppercutup@msn.com)  
Ph: 9284722588  
Fax: 9284722590  
308 E. Aero Drive  
Payson, AZ 85541

**Arizona Rural Womens Health Network** (Network Member)

---

**Edie McRee Bowles, Executive Director**

Email: [firenz72@yahoo.com](mailto:firenz72@yahoo.com)  
Ph: 8044436286  
Fax: 8044433780  
629 Hospital Road  
Tappahanock, VA 22560  
[www.bayriverstelehealth.org](http://www.bayriverstelehealth.org)

**Bay Rivers Telehealth Alliance** (Network Member)

---



**Beverly Santicola, Director**

Email: [santicola@sbcglobal.net](mailto:santicola@sbcglobal.net)  
Ph: 8668433493  
Fax: 7139600537  
2929 Buffalo Speedway #213  
Houston, TX 77098  
[www.healthnetworkcenter.org](http://www.healthnetworkcenter.org)

**Center for Rural Outreach & Public Services, Inc.** (Network Member)

CROPS Health Network Center provides leadership development, capacity building, and sustainability services to health networks, health care providers, government agencies, churches, schools and other nonprofit organizations. We have created and trademarked a model program called Growing Rural – Youth Leadership in Public Health that can be replicated in any community to assist rural health networks in sustainability and growth. CROPS Health Network Center partners with a team of national experts specializing in grant writing and training, prospect research, donor relations, business development, marketing and communications, social media, health research, program planning, grants management and more. We are interested in collaborating on grants with other health networks.

---



**Carolyn Witherspoon, Executive Director**

Email:  
[carolyn.witherspoon@cohs.net](mailto:carolyn.witherspoon@cohs.net)  
Ph: 8063371700  
Fax: 8063371704  
301 South Polk Suite 740  
Amarillo, TX 79101  
[www.cohs.net](http://www.cohs.net)

**Coalition of Health Services Inc.** (Network Member)

The Coalition of Health Services was organized in February 1996 and incorporated as a 501(c)(3) not for profit organization in October 1997. There are currently 14 hospital affiliates, serving twenty-six counties in the Texas Panhandle. The Coalition contracts with the Texas Department of Health Services and the Texas Health and Human Services Commission to provide access to Title V, Primary Health Care, Breast and Cervical Cancer Services, CHIP, Medicaid, and Children with Special Healthcare Needs within these 26 counties. The Coalition then subcontracts with 28 clinics throughout the region for a variety of these services.

---

**Yvonne Hughes, Executive Director**

Email:  
[yhughes@coastalalliance.org](mailto:yhughes@coastalalliance.org)  
Ph: 9103328019  
Fax: 9103328042  
5303 Wrightsville Avenue  
Wilmington, NC 28403  
[www.coastalalliance.org](http://www.coastalalliance.org)

**Coastal Carolinas Health Alliance** (Network Member)

**Scherrie Cogdill, Director**

Email:  
[scogdill@clarendonhealth.com](mailto:scogdill@clarendonhealth.com)  
Ph: 8034355246  
Fax: 8034355274  
PO Box 550  
Manning, SC 29102  
[www.clarendonhealth.com](http://www.clarendonhealth.com)

**Coastal Plain Rural Health Network** (Network Member)



**Deb Gott, Interim Director**

Email:  
[deb.gott@communityhealth.net](mailto:deb.gott@communityhealth.net)  
Ph: 8665192464  
Fax: 8666925769  
PO Box 40  
Oakdale, TN 37829

**Community Health Network Inc.** (Network Member)

Community Health Network is a 501c3 shared benefit organization created in 2001 by community health centers through the State of Tennessee and the Tennessee Primary Care Association. It's focus was to address the information technology and business support needs of its member organizations. Through the years, the services provided to the network have grown from comprehensive IT support and hosting of practice management systems to the addition of shared purchasing, telehealth, health information exchange, and hosting electronic health records systems.

---



**Greg Dent, Chief Executive Officer**

Email: [gdent@chwg.org](mailto:gdent@chwg.org)  
Ph: 4782545200  
Fax: 4782545239  
300 Mulberry Street  
Suite 603  
Macon, GA 31201  
[www.chwg.org](http://www.chwg.org)

**Community Health Works** (Network Member)

---

**Paul Davis, President**

Email: [buzdavis@mac.com](mailto:buzdavis@mac.com)  
Ph: 2072332264  
10576 East Sleepy Hollow Tr  
Gold Canyon, AZ 85118

**Davis & Associates, LLC** (Associate Member)

---

**Tara Cramer, Executive Director**

Email: [tcramer@eghealthcoop.org](mailto:tcramer@eghealthcoop.org)  
Ph: 4785532497  
Fax: 4785532499  
PO Box 5706  
Sandersville, GA 31082  
[www.eghealthcoop.org](http://www.eghealthcoop.org)

**East Georgia Health Cooperative** (Network Member)

East Georgia Health Cooperative provides members custom developed physician recruiting, representation at medical fairs and networking opportunities. The Cooperative also offers a full line of marketing services, onsite educational programs, grant research and assistance along with multiple cost savings through group purchasing options. The Cooperative consistently seeks out new opportunities for its members including partnering with outside groups to promote its mission and goals.

---

**Brian Ahier, President**

Email: [gorge.health@gmail.com](mailto:gorge.health@gmail.com)  
Ph: 5412981188  
Fax: 5412985199  
P.O. Box 1141  
The Dalles, OR 97058  
[www.gorgehealthconnect.org](http://www.gorgehealthconnect.org)

**Gorge Health Connect** (Network Member)

**Jenifer Noland, Network Director** **Hancock County Rural Health Network** (Network Member)

Email:  
jenifer.noland@westcare.com  
Ph: 4233000609  
Fax: 4237332681  
1246 Main Street  
Sneedville, TN 37869

---

**Tracy Andrews, Primary Care Network Director** **Health and Wellness Cooperative of Northern Michigan** (Network Member)

Email:  
tandrews@northernhealth.org  
Ph: 2314874000  
Fax: 2314874552  
416 Connable Ave.  
Petoskey, MI 49770

---



**Toniann Richard, Executive Director**

Email: toniann@hccnetwork.org  
Ph: 6602599019  
Fax: 6602599019  
811 D Highway 13  
Lexington, MO 64067  
hccnetwork.org

**Health Care Coalition of Lafayette County** (Network Member)

The HCC has a mission of securing comprehensive health services across the continuum of care and utilizes a systems of care, community-based planning model. The initial focus of the Network was on establishing a collaborative approach to identifying and addressing the health care and social service needs of Lafayette County residents. Within the last two years, however, the HCC has gradually been broadening its scope of work to include neighboring counties, specifically in the areas of health insurance, HIT and telemedicine.

---

**Jon Sewell, President & CEO**

Email:  
jsewell@healthenterprises.org  
Ph: 3193683613  
Fax: 3193683626  
4250 Glass Road NE  
Cedar Rapids, IA 52402  
www.healthenterprises.org

**Health Enterprises** (Network Member)

---

**Chris Chang-Howitz, CEO/CFO**

**Health Future LLC** (Network Member)

Email: [c-chang@healthfuture.org](mailto:c-chang@healthfuture.org)  
Ph: 5416187253  
Fax: 5417723181  
777 Murphy Road  
Medford, OR 97504  
[www.healthfuture.org](http://www.healthfuture.org)

---

**Carlos Garcia, Director**

**Health Information Network of South Texas** (Network Member)

Email:  
[carlos.a.garcia@tamuk.edu](mailto:carlos.a.garcia@tamuk.edu)  
Ph: 3615932915  
Fax: 3615933800  
TAMUK-Department of Biological  
and Health Sciences  
700 University Blvd. MSC 158  
Kingsville, TX 78363

---

**Kristi Gosser, Network  
Operations Director**

**Health Innovations Network of Kansas** (Network Member)

Email: [kristig@stormontvail.org](mailto:kristig@stormontvail.org)  
Ph: 7853546137  
Fax: 7853545963  
1500 SW 10th Street  
c/o StormontVail Healthcare  
Topeka, KS 66606

In an effort to improve the health status of the populations we individually and collectively serve, a consortium of area hospitals, in conjunction with our Boards of Directors, medical staffs, and other community providers, will develop a network that fosters cooperation and coordination. Our priority is to enhance the integration of health related services among consortium member communities while respecting local autonomy. We shall work to enhance the cost effectiveness of member hospitals/providers by sharing services and/or expertise in such areas as clinical, support, administration and education. We shall also strive to better integrate health related services among providers within our respective communities as well as on a regional basis.

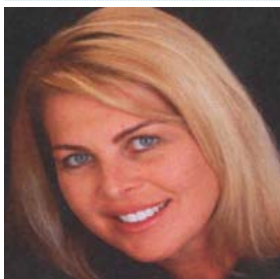
---

**Rob Smith, Chief Executive  
Officer (Interim)**

**HealthGroup of Alabama** (Network Member)

Email: [resmith@hgala.org](mailto:resmith@hgala.org)  
Ph: 2569226683  
Fax: 2569226681  
6767 Old Madison Pike  
Huntsville, AL 35806

---



**Alisha Fehrenbacher, Executive Director**

Email: [alisha@healthmattersco.org](mailto:alisha@healthmattersco.org)  
Ph: 5416471765  
Fax: 5416472646  
2525 NE Twin Knolls Drive  
Suite 7  
Bend, OR 97701  
[www.healthmattersco.org](http://www.healthmattersco.org)

**HealthMatters of Central Oregon** (Network Member)

Since the inception in 2005, HealthMatters of Central Oregon has brought together thought-leaders throughout the region to establish dialogue and develop sustainable health care programs for regional implementation. As a health collaborative hub, HealthMatters has implemented four primary initiatives that include affordable health coverage for low-wage uninsured workers, care coordination program that focuses on all health and human service connections, prevention and consumerism programs for employees to make healthy lifestyle choices, and a chronic disease self-management program to allow Central Oregon residents tools to manage and improve their lives. Every program was developed and implemented to work in concert creating an active healthy lifestyle and community for all. The collective goal with our partnerships and our collaborative efforts is to create real and lasting change to the health care landscape in Central Oregon.

---

**Ken Foster, Director**

Email: [kenneth.foster@bryanlgh.org](mailto:kenneth.foster@bryanlgh.org)  
Ph: 3084935353  
Fax: 3084935355  
P.O. Box 53  
Holbrook, NE 68948  
[www.hha.org](http://www.hha.org)

**Heartland Health Alliance** (Network Member)



**Pat Schou, Executive Director**

Email: [pschou@icahn.org](mailto:pschou@icahn.org)  
Ph: 8158752999  
Fax: 8158752990  
245 Backbone Road  
Princeton, IL 61356  
[www.icahn.org](http://www.icahn.org)

**Illinois Critical Access Hospital Network** (Network Member)

The Illinois Critical Access Hospital Network (ICAHN) is a not-for-profit 501 (c)(3) corporation established in 2003 for the purposes of sharing resources, providing education, promoting operational efficiencies, and improving health care services for member critical access hospitals and their rural communities. ICAHN, with its 51 member hospitals, is an independent network governed by a nine member Board of Directors with standing and project development committees facilitating the overall activities of the network. The mission of ICAHN is to strengthen Illinois critical access hospitals through collaboration.

---



**Don Kelso, Network Director**

Email: [dkelso@indianarha.org](mailto:dkelso@indianarha.org)  
Ph: 8124783919  
Fax: 8122328602  
2901 Ohio Blvd., Suite 110  
Terre Haute, IN 47803-2249  
[www.indianaruralhealth.org](http://www.indianaruralhealth.org)

**Indiana Statewide Rural Health Network** (Network Member)

InSRHN provides support to rural entities in the development of formal health care networks in order to coordinate; improve and expand access to quality essential health care services; and enhance the delivery of health care in rural areas. Our network of rural providers is dedicated to improving their ability to deliver high-quality health care to rural residents. We provide peer collaboration in roundtable discussion groups, best practice sharing, peer learning and mentoring, leverage in buying power, various educational opportunities throughout the year and much more. We are constantly evolving for our members and bringing them the latest in healthcare news/updates.

---

**Beverlyann Austin**

Email: [BVAustin1108@aol.com](mailto:BVAustin1108@aol.com)  
Ph: 8037609375  
Fax: 8038653366  
P.O. Box 1610  
Columbia, SC 29202

**Individual Member** (Associate Member)

---

**Signe Porter, Interim CEO**

Email: [sporter@kodfp.org](mailto:sporter@kodfp.org)  
Ph: 5418802021  
Fax: 5418802070  
2074 South Sixth Street  
Klamath Falls, OR 97601  
[www.klamathopendoor.org](http://www.klamathopendoor.org)

**Klamath Health Partnership** (Network Member)

---

**Dawn Wichmann, Executive Director**

Email: [dwichmann@lrhn.org](mailto:dwichmann@lrhn.org)  
Ph: 8643308221  
Fax: 8643881718  
113 Liner Drive  
Greenwood, SC 29646  
[www.lrh.org](http://www.lrh.org)

**Lakelands Rural Health Network** (Network Member)

***Kathy Schwarting, Network Administrator***

Email: [kathys@lchcn.org](mailto:kathys@lchcn.org)  
Ph: 8032456673  
Fax: 8032456803  
PO Box 177  
Bamberg, SC 29003  
[www.lchcn.org](http://www.lchcn.org)

**Low Country Health Care Network** (Network Member)

Low Country Health Care Network (LCHCN) is a vertically integrated network that works with the health care providers in the rural communities of Allendale, Bamberg, Barnwell and Hampton counties in South Carolina. Our vision is to provide a delivery system that respects member autonomy while focusing on "common ground" issues which enhance health services, promote healthier communities, accommodate changing conditions throughout the service area and reduce member operating costs. LCHCN works to affect positive change in the access, delivery, availability and affordability of quality health care and support the delivery of these benefits to the residents of the Low Country.

---

***Debra Ranallo, Executive Director***

Email: [dranallo@medisota.org](mailto:dranallo@medisota.org)  
Ph: 3207692269  
Fax: 3207692298  
1280 Locust Street  
Dawson, MN 56232  
[www.medisota.org](http://www.medisota.org)

**MediSota Inc.** (Network Member)



***Chris Hopkins, VP Strategy and Business Development***

Email: [chopkins@montanahealthnetwork.com](mailto:chopkins@montanahealthnetwork.com)  
Ph: 4062341420  
Fax: 4062341423  
11 South 7th, Suite 241  
Miles City, MT 59301  
[www.montanahealthnetwork.com](http://www.montanahealthnetwork.com)

**Montana Health Network** (Network Member)

Montana Health Network (MHN) is a consortium of healthcare facilities located across the state of Montana and Wyoming. It is comprised of seventeen shareholding members and thirty three affiliate members in Montana, and two affiliate members in Wyoming. Montana Health Network was established in 1987 on a core product of workers compensation. Since its establishment MHN has grown to provide a full compliment of human resource benefits for member employees as well as other insurance products to help cover our member facilities. Other services include a robust mobile education department, mobile MRI and a collection agency.

---



---

**Roxane Romanick, Chair**

Email: [Romanick@bis.midco.net](mailto:Romanick@bis.midco.net)  
500 University Ave West  
Minot, ND 58707

**ND FamNet** (Network Member)

ND FamNet is a network of nonprofit organizations and a few state agencies that provide family support services to families with children, youth and young adults with special healthcare needs. Our twelve members provide services throughout the entire state of North Dakota. At this time we have three priority areas/workgroups: family and technology, inclusive child care, and health benefits counseling. Our network has applied for a HRSA Network Development Grant in order to assist us with the implementation of a health benefits counseling network within the state. And we have just received notification from the IRS on the acceptance of our successful 501 (c) (3) application.

---

---

**Joan Hall, President**

Email: [joan@nrhp.org](mailto:joan@nrhp.org)  
Ph: 7758274770  
Fax: 7758270939  
4600 Kietzke Lane, Suite #1209  
Reno, NV 89502  
[www.nrhp.org](http://www.nrhp.org)

**Nevada Rural Hospital Partners** (Network Member)

---

**Martha McLeod, Executive Director**

Email: [mmcleod@nchcnh.org](mailto:mmcleod@nchcnh.org)  
Ph: 6032593700  
Fax: 6034440945  
262 Cottage Street, Suite 230  
Littleton, NH 03561  
[www.nchcnh.org](http://www.nchcnh.org)

**North Country Health Consortium** (Network Member)

The North Country Health Consortium (NCHC), is a mature rural health network which has been improving the sustainability of the rural health and human service delivery system and improving access to health care for rural residents of Northern New Hampshire since 1998. The Consortium's mission statement is: To lead innovative collaboration to improve the health status of the region. 29 Member organizations work together in five programmatic areas: Workforce Development; Community Substance Abuse Prevention; Public Health Capacity; Mobile Oral Health Services; and Policy and Advocacy. Members include Critical Access Hospitals, Community Health Centers, Community Mental Health, Home Health, Nursing Homes, EMS, Faith-based social services, Community Action Program, Family Resource Center, Academic Medical Center, State College and a Community College.

---

**Lisa Ladendorff, Interim Director**    **North East Oregon Network** (Network Member)

Email:  
lladendorff@neonoregon.org.  
Ph: 5416245102  
Fax: 5416245105  
1802 4th St., Suite A  
La Grande, OR 97850  
www.northeastoregonnetwork.org

---

**Jack King, Executive Director**    **Northcentral Montana Healthcare Alliance** (Network Member)

Email: jackking@benefis.org  
Ph: 4064554285  
Fax: 4064554154  
1101 26th Street South  
Great Falls, MT 59405

---

**Jinger Greer, Network Director**    **Northeast Louisiana Regional Alliance** (Network Member)

Email: jgreer@delhihospital.com  
Ph: 3188782845  
Fax: 3188784749  
407 Cincinnati Street  
Delhi, LA 71232

---



**Brendan Ashby, Director**

Email:  
bashby1@range.fairview.org  
Ph: 2183123009  
Fax: 2183123011  
1200 E. 25th Street  
Hibbing, MN 55746  
www.myu.umn.edu/metadot/index.pl?5886070

**Northeast Minnesota Interprofessional Health Network**  
(Network Member)

The Northeast Minnesota AHEC's mnHEALTHnet serves as a collaborative interprofessional network of health care, community, and academic partners committed to supporting community organizations in developing chronic care management/education and training resources to improve health in rural and underserved communities. The vision of Northeast Minnesota AHEC's mnHEALTHnet is: "To create healthier communities through a fully engaged interprofessional health care network collaborative." The goal of Northeast Minnesota AHEC's mnHEALTHnet is to develop a functional and sustainable rural health network that will address improved health outcomes for rural and underserved residents in Northern Minnesota.

---



**Glenna Daniels Young, Executive Director**

Email: [nmrhn@sbcglobal.net](mailto:nmrhn@sbcglobal.net)  
Ph: 6606650330  
Fax: 6606650030  
117 W. Potter Avenue  
Kirksville, MO 63501  
[www.nmrhn.org](http://www.nmrhn.org)

**Northeast Missouri Rural Health Network** (Network Member)

The Northeast Missouri Rural Health Network, formed in 1998 with four partners, offers both member services and patient programs throughout an eleven-county area. The Network's aim is to achieve regional health improvements through collaboration, coordination and sharing of services and resources among its 27 individually-owned member agencies which includes hospitals, health departments, ambulance districts, a community health center, independent physicians association, mental health providers, a nursing home, hospice, as well as other types of health care providers and medical educators.

---

**Lisa Williams, Executive Director**

Email:  
[lisawilliams@nrhnonline.org](mailto:lisawilliams@nrhnonline.org)  
Ph: 8436233448  
Fax: 8436235360  
P.O. Box 648  
Chesterfield, SC 29709  
[www.nrhnonline.org](http://www.nrhnonline.org)

**Northeastern Rural Health Network** (Network Member)



**Terry Hill, Director**

Email: [thill@ruralcenter.org](mailto:thill@ruralcenter.org)  
Ph: 2187279390  
Fax: 2187279392  
600 E. Superior Street Suite 404  
Duluth, MN 55802-2208

**Northern Lakes Health Consortium** (Network Member)

**Timothy Cox, President**

Email:  
[tcox@northlandhealth.com](mailto:tcox@northlandhealth.com)  
Ph: 7012500709  
Fax: 7012500739  
3811 Lockport Street Suite 3  
Bismarck, ND 58503  
[www.northlandhealth.com](http://www.northlandhealth.com)

**Northland Healthcare Alliance** (Network Member)

---

**Carolyn Trumbull, Executive Director**

Email:  
Carolyn\_Trumbull@mhsnr.org  
Ph: 4198438880  
Fax: 4198438886  
3230 Central Park West Dr. Ste.  
206  
Toledo, OH 43617

**Northwest Ohio Shared Services** (Network Member)

**Angel Perry**

Email: angel.perry@oshn.org  
Ph: 6142933756  
Fax: 6142936609  
660 Ackerman Road Room 601F  
Columbus, OH 43218  
www.oshn.org

**Ohio State Health Network** (Network Member)

**Eric Buckland, Executive Director**

Email:  
ebuckland@bendbroadband.com  
Ph: 541-306-3439  
61008 Creekstone Loop  
Bend, OR 97702  
ohsu.edu/xd/outreach/oregon-  
rural-health/hospitals/oregon-  
rural-healthcare-quality/

**Oregon Rural Health Quality Network** (Network Member)



**Bob Whitler, Executive Director**

Email: bob.whitler@camc.org  
Ph: 3043887385  
Fax: 3043887390  
405 Capitol Street, Suite 505  
Charleston, WV 25301  
www.pihn.org

**Partners in Health Network Inc.** (Network Member)

Partners In Health Network, Inc. (PIHN) is the largest and oldest rural health network in West Virginia. It is a vertically integrated network with 26 members including Federally Qualified Health Centers (FQHC) and FQHC look-a-likes, critical access hospitals, acute care hospitals, a tertiary care teaching hospital, a psychiatric hospital, a women's health center, a health department, an aeromedical service and a community mental health center. The Network covers 17 counties located in southern and central West Virginia. PIHN operates a NCQA Certified Credentialing Verification Organization (CVO). In addition, the Network obtains private and government grants to provide access to health care to the working uninsured and to provide enhanced care management to the same population as well as Medicaid beneficiaries.

**Mary Adam, Executive Director**

Email: [mary@phn.org](mailto:mary@phn.org)  
Ph: 6202766100  
Fax: 6203070394  
310 East Walnut, Suite 210  
P.O. Box 1787  
Garden City, KS 67846  
[www.phn.org](http://www.phn.org)

**Pioneer Health Network, Inc.** (Network Member)

PHN is a consortium of seventeen hospitals serving over 120,000 people in Western Kansas. Its central office is located on the campus of St. Catherine Hospital in Garden City, Kansas. The purpose of the Network is to provide a mechanism for its members to collaborate and pool resources. Since its inception in 1995, PHN has provided a variety of activities and projects to benefit its members including: Group purchasing contracts; health career promotion and awareness programs; peer level collaboration and networking; ITV applications; custom designed educational programming; and, web-based financial and risk management applications. PHN has also partnered with various organizations and agencies in a number of successful grant ventures to benefit its members.

---



**Esther Hammerschlag, Network Director**

Email: [POWNetwork@aptalaska.net](mailto:POWNetwork@aptalaska.net)  
Ph: 9078262410  
Fax: 9078262411  
PO Box 812  
Craig, AK 99921  
[www.princeofwaleshealthnetwork.org](http://www.princeofwaleshealthnetwork.org)

**Prince of Wales Health Network** (Network Member)

The Prince of Wales Health Network is a 4 member vertical network of healthcare providers serving Prince of Wales Island, located in Southeast Alaska. The Network was formed in 2008 to increase communication and collaboration between providers and improve the quality and accessibility of healthcare to island residents. Areas of Network focus include behavioral health, community health education, EMS, elder services, CME, visiting specialty clinics, and overall improved coordination of services.

---

**Joleen Huneke, Executive Director**

Email: [jthserpa@neb.rr.com](mailto:jthserpa@neb.rr.com)  
Ph: 4028263737  
Fax: 4028263746  
995 E Highway 33  
Crete, NE 68333  
[www.rccn.info](http://www.rccn.info)

**Rural Comprehensive Care Network** (Network Member)

**Erik Malchow, Executive Director**

Email: [malchow@charter.net](mailto:malchow@charter.net)  
Ph: 3207628602  
Fax: 3207636401  
1210 S .Broadway Suite 240;  
#271  
Alexandria, MN 56308

**Rural Health Alliance** (Network Member)

---



**Dave Johnson, Director of  
Member Relations & Business  
Development**

Email: [djohnson@rwhc.com](mailto:djohnson@rwhc.com)  
Ph: 6086432343  
Fax: 6086434936  
880 Independence Lane  
Sauk City, WI 53583  
[www.rwhc.com](http://www.rwhc.com)

**Rural Wisconsin Health Cooperative** (Network Member)

RWHC (Rural Wisconsin Health Cooperative) is owned by 35 rural, general medical surgical hospitals in Wisconsin. Since 1979, RWHC has been providing affordable and effective services to rural health entities.



**Tiffany Simpson-Crumpley,  
Director of Network Activities**

Email: [tiffany@scorh.net](mailto:tiffany@scorh.net)  
Ph: 8032061907  
Fax: 803-454-3867  
107 Saluda Pointe Drive  
Lexington, SC 29072

**South Carolina Office of Rural Health** (Associate Member)

---

**Dale Armstrong, CEO**

Email: [darmstrong@sahalliance.org](mailto:darmstrong@sahalliance.org)  
Ph: 9193502004  
Fax: 9194816781  
125 Edinburgh South Dr.  
Suite 220  
Cary, NC 27511  
[www.sahalliance.org](http://www.sahalliance.org)

**Southern Atlantic Healthcare Alliance** (Network Member)

The Southern Atlantic Healthcare Alliance (SAHA) was established in 2004 to nurture collaborative relationships among member hospitals in order to improve the quality of healthcare. We focus on five key factors: cost savings; clinical quality & safety; compliance; knowledge sharing and education. In 2010, the Board of Directors, comprised of the Chief Executive Officers of each member facility, added two new emphases: innovation and solution orientation. These problem-solving approaches will help hospitals deal successfully with changing health care imperatives and economic conditions.

---

**Steve Stoddard, Executive  
Director**

Email: [stoddars@slrmc.org](mailto:stoddars@slrmc.org)  
Ph: 2083811571  
Fax: 2083811551  
PO Box 607  
Boise, ID 83701

**Southwest Idaho Community Health Network** (Network  
Member)

***Tina Freese, Executive Director***

Email: [christina.freese@spectrumhealth.org](mailto:christina.freese@spectrumhealth.org)  
Ph: 6163919234  
Fax: 6163913822  
665 Seward Avenue NW Suite 320  
Grand Rapids, MI 49504  
[www.shrhn.org](http://www.shrhn.org)

**Spectrum Health Regional Hospital Network** (Network Member)

The Spectrum Health Regional Hospital Network is comprised of 21 hospitals in West Michigan, with a mission to improve the health status of our communities by providing an integrated approach to regional health care delivery that exceeds consumers' expectations of quality, customer service and cost-effective health care while preserving the economic strength of local providers. Our members work together to achieve our goals via shared service agreements, best practice discussions and cross-functional and departmental meetings. Our work is driven by improving quality and creating value – since 2003, we have saved over \$15 million for our members.

---



***Heather Fuller, Executive Director***

Email: [hfuller@srhc.com](mailto:hfuller@srhc.com)  
Ph: 7854526102  
Fax: 7854526116  
PO Box 2568  
Salina, KS 67401  
[www.sunflowerhealthnetwork.com](http://www.sunflowerhealthnetwork.com)

**Sunflower Health Network** (Network Member)

The Sunflower Health Network (SHN) is a not-for-profit organization formed in 1994 that consists of 16 hospitals located primarily in North Central Kansas. The mission of the SHN is to improve the effectiveness and efficiency of healthcare delivery in the region we serve. Some of the programs and services of the SHN include group purchasing, group health insurance, equipment maintenance, physician recruitment, advocacy, emergency preparedness, shared staff pools, and education/round tables for various department directors. The priorities of the SHN are to:

1. Improve access to specialist physician care throughout the region.
  2. Reduce hospital vulnerability to changes in Medicare reimbursement policies.
  3. Optimize timeliness and safety of inter-hospital referrals and transfers.
  4. Sustain adequate number of quality nurses (and other key professionals).
  5. Optimize patient care quality within each member hospital.
  6. Improve the capacity to share electronic patient care information.
- 



***Gerald Vicenzi, President and CEO***

Email: [gvicenzi@synernet.net](mailto:gvicenzi@synernet.net)  
Ph: 2077713456  
Fax: 2077753415  
222 St. John Street  
Suite 329  
Portland, ME 4102  
[www.synernet.net](http://www.synernet.net)

**Synernet Inc.** (Network Member)

Synernet is a creative, customer-focused organization that provides alternative cost-saving approaches to services that are currently being performed within hospitals and healthcare organizations, by leveraging best practices, technology and scale to obtain greater efficiencies. Current services include: medical transcription, credentials verification, clinical engineering, a self-funded workers compensation program, and third-party administration for existing self-insured workers compensation programs.

---



**Jon Smith, Executive Director**

Email: [jons@portmed.org](mailto:jons@portmed.org)  
Ph: 2082392162  
Fax:  
850 E. Young  
Pocatello, ID 83201  
[www.hospitalcooperative.org](http://www.hospitalcooperative.org)

**The Hospital Cooperative** (Network Member)

The Hospital Cooperative is a dynamic organization consisting of fourteen hospitals in southeastern Idaho and western Wyoming. Our mission is to strengthen regional health care by providing support and increasing value to members through shared resources, knowledge and information. With guidance from an executive board of hospital leaders, the staff of The Hospital Cooperative plans and organizes programs and activities that enable member hospitals to accomplish more together than would be possible alone. Programs offered by The Hospital Cooperative include: group contracts, group education, peer networking, benchmarking, and technical assistance.

---



**Mary Ann Watson, Network Director**

Email: [maryann.watson@theruralpartnership.com](mailto:maryann.watson@theruralpartnership.com)  
Ph: 6152427872  
Fax: 6152554121  
500 Interstate Blvd S.  
Suite 203  
Nashville, TN 37210  
[www.theruralpartnership.com](http://www.theruralpartnership.com)

**The Rural Partnership** (Network Member)

The Tennessee Rural Partnership, formed in 2006, is a workforce development network which focuses on activities related to the placement and retention of primary care health care providers in rural and underserved areas of the state. Network members include the four medical schools in Tennessee (the Quillen College of Medicine at East Tennessee State, Meharry Medical College, the University of Tennessee Health Science Center College of Medicine and Vanderbilt University College of Medicine), the Tennessee Hospital Association, the Rural Health Association of Tennessee and the Tennessee Primary Care Association. TRP works with communities and health care entities within the state to maintain a current inventory of needs and placement opportunities within the communities and communicates directly with medical residents and other professional health care students regarding practice opportunities and incentive programs for practicing in rural and underserved areas of Tennessee.

---

**Darcy Czarnik Laurin, Executive Director**

Email: [trhn.darcy@gmail.com](mailto:trhn.darcy@gmail.com)  
Ph: 9833740038  
2188 S. Duncan Road  
Midland, MI 48640

**Thumb Rural Health Network** (Network Member)



**Kristen Christy, Network Director** **Union County Health and Wellness Network** (Network Member)

Email:  
kristen.christy@ucghc.com  
Ph: 5753742585  
Fax: 5753748146  
PO Box 489  
c/o Union County General  
Hospital  
Clayton, NM 88415

---

**Vacant**

Email:  
Ph: 8037120375  
Fax: 8037121683  
PO Box 620  
Winnsboro, SC 29180

**Upper Midlands Rural Health Network** (Network Member)

The Upper Midlands Rural Health Network is a two County network (Fairfield and Chester Counties) of health, human service and education providers located in the north central area of South Carolina. Its mission is to improve health in the Upper Midlands region through collaboration of a diverse group focused on access to care, health promotion and education.

---



**Dennis Smith, Interim Executive Director**

Email: dhsmith@uphn.org  
Ph: 9072253146  
Fax: 9062257868  
228 W Washington Street Suite 2  
Marquette, MI 49855  
www.uphcn.org

**Upper Peninsula Health Care Network** (Network Member)

The Upper Peninsula Health Care Network (UPHCN) is a corporation of 14 organizations formed to facilitate access to high-quality health care at a reasonable cost. The 14 network members continuously work to provide coordinated health care delivery for the 319,000 residents of Michigan's Upper Peninsula and surrounding communities. Collaborative efforts among network members include: Joint purchasing, Education, Mobile MRI services, The Upper Peninsula Poison Crisis Network, The Upper Peninsula Medical Library Consortium, The Upper Peninsula Teleradiology, Teleconferencing, and Telemedicine Networks. The UPHCN continues to develop an Upper Peninsula-wide integrated information-systems network to connect the Upper Peninsula hospitals, providing a cost-effective mechanism to access patient information and streamline patient-care delivery.

---

**David Luoma, Chief Executive Officer**

Email: david.luoma@mghs.org  
Ph: 9062287970  
Fax: 9062285734  
418 W. Magnetic Street  
Marquette, MI 49855  
www.mgh.org/uphec

**Upper Peninsula Health Education Corporation** (Network Member)

***Robin Johnson, Executive Director***

Email: rgjohnson@health-partners.org  
Ph: 4192269715  
Fax: 4199965223  
2615 Fort Amanda Road  
Lima, OH 45804  
www.wcorha.org

**West Central Ohio Regional Healthcare Alliance** (Network Member)

***Carolyn Bruce, Executive Director***

Email: carolyn.bruce@wha1.org  
Ph: 8888280011  
Fax: 9706835255  
PO Box 2907  
Grand Junction, CO 81502-2907  
www.wha1.org

**Western Healthcare Alliance** (Network Member)

***Janice Lato, Executive Director***

Email: janice.lato@wnchn.org  
Ph: 8286678220  
Fax: 8286678228  
1200 Ridgefield Blvd, Ste 200  
Asheville, NC 28806  
www.wnchn.org

**Western North Carolina Health Network** (Network Member)

***Elizabeth Floersheim, Executive Director***

Email: efloersheim@msn.com  
Ph: 2067695871  
Fax: 2068017730  
PO Box 55451  
Seattle, WA 98155  
www.wwrhcc.org

**Western Washington Rural Health Care Collaborative** (Network Member)



**Dee Dee Dewell, Director of  
Critical Access Hospital  
Networks**

Email: [dee.dee.dewell@viachristi.org](mailto:dee.dee.dewell@viachristi.org)  
Ph: 3168584988  
Fax: 3168584198  
8200 East Thorn Avenue  
Wichita, KS 67226  
[www.wphn.net](http://www.wphn.net)

**Wheat Plains Health Network** (Network Member)

The Wheat Plains Health Network (WPHN) is a rural health network of 10 hospitals in south central Kansas that was formed in 2002. The purpose of the WPHN is to facilitate and monitor the covenants and protocols outlined in the Network Agreements, to identify and make recommendations to resolve issues and challenges related to the delivery of healthcare services within the WPHN, and to foster the development and expansion of high-quality, cost-effective and appropriate services needed by the patients of the WPHN service area.



**Angela Dugger, Interim Program  
Director**

Email: [adugger1@wrmc.com](mailto:adugger1@wrmc.com)  
Ph: 870-262-1927  
Fax: 870-262-3248  
P.O. Box 2197  
Batesville, AR 72501

**White River Health System** (Network Member)

The White River HIT Network has a mission of leveraging existing Health Information Technology and providing technical assistance services to rural healthcare providers and Critical Access Hospitals in north central Arkansas enabling them to implement EHR and move toward meaningful use.